



# MH 61EN

## TWO-WAY PLASTIC HORN SPEAKER



### Description

MH 61EN is a two-way plastic horn speaker suitable for both broadcasting alarm messages (thanks to the highly intelligible voice reproduction) and background music, and can be used for sound reinforcement and speech systems in medium and large spaces. The terminal connection blocks, for input and output flameproof cables, are made of ceramic material. A thermal fuse protects the integrity of the line in case of heat affecting the speaker. It can be easily aimed towards any direction through the adjustable wall-mount bracket, and thanks to its IP66 protection grade it can be installed both indoor and outdoor.

### Features

- › 6.5" woofer with 1" dome tweeter.
- › Power selectable (100 V): 60 W – 30 W – 15 W – 7.5 W.
- › 99 dB sensitivity.
- › Colour grey RAL 7035.
- › Plastic body.
- › In/out ceramic terminal block.
- › Thermal fuse protection.
- › Protection grade IP66.

### Part Number

13100042 MH 61EN

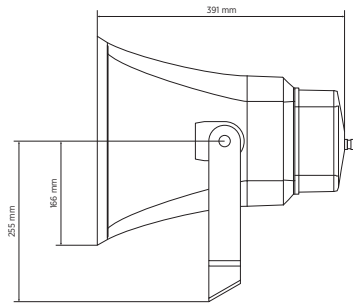
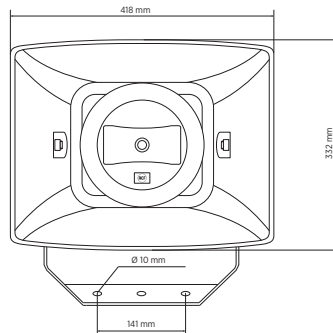
Grey - RAL 7035 EAN 8024530016364



# MH 61EN

## TWO-WAY PLASTIC HORN SPEAKER

Line Art 2D



### TECHNICAL SPECIFICATIONS

Acoustical specifications	Frequency Response (-10dB)	100 Hz ÷ 20000 Hz
	Max SPL @ 1m	115 dB
	Max SPL @ 4m	103 dB
	Horizontal coverage angle	70°
	Vertical coverage angle	90°
	System Sensitivity	99 dB
Power section	System Sensitivity 1W @ 4m	87 dB
	Nominal Impedance	8 ohm
	Power Handling	60 W
	Peak Power Handling	240 W PEAK
	Protections	Thermal fuse
	Recommended Amplifiers	DXT 3000, DXT 4000, DXT 7000
Transducers	Dome Tweeter	1 x 1.0"
	Woofer	1 x 6.5"
Input/Output section	Input connectors	Ceramic screw terminals
	Output connectors	Ceramic screw terminals
	Constant Voltage Transformer	100 V
	Power selection 1	60 W - 167 ohm
	Power selection 2	30 W - 333 ohm
	Power selection 3	15 W - 667 ohm
Standard compliance	Power selection 4	7.5 W - 1333 ohm
	IP protection grade	IP 66
	Safety agency	CE compliant
	EN54-24 certified	Yes
	CPR number	1488-CPR-0672/W
Physical specifications	Cabinet/Case Material	ABS
	Hardware	Steel bracket
	Color	Grey - RAL 7035



MH 61EN

TWO-WAY PLASTIC HORN SPEAKER

Size / Weight	Height	332 mm / 13.07 inches
	Width	418 mm / 16.46 inches
	Depth	391 mm / 15.39 inches
	Weight	7.35 kg / 16.2 lbs